

*America's Finest*

MAILBOX COMPANY

*"More than just a box for mail."*



Castle Hill Lighthouse  
Newport, Rhode Island

A Division of

 **OLD CALIFORNIA**  
LANTERN COMPANY

Spring 2013

*Made in America... Made to Last...*

We are very proud to present our beautiful collection of "America Made" mailboxes.

We have turned the ordinary "box for mail" into a work of art and a wonderful addition to your front entry. Each solid brass mailbox is handcrafted to your specifications at our factory in Orange, CA. You can select from one of three sizes, each with multiple metal finish and glass options, to create a mailbox that will be the talk of the neighborhood.



Pineapple Vertical Mount  
AF-951-BZ-HN  
W 9½" x H 12" x D 5½"



Classic "MAIL" Horizontal  
AF-2-BZ-CH  
W 16½" x H 8¾" x D 5½"



Monterey Cypress Large  
AF-143-BZ-GI  
W 16½" x H 13¼" x D 5½"





Drop in LED Light Kit

Our patented LED light kit brings light and drama to the beautiful artwork on your America's Finest mailbox. Available for all of our wall mount mailboxes our LED light kit uses only 8 watts of power and lasts for 30,000 hours.

*AF* Exclusive

Illuminated Front Panel

Japanese Maple Horizontal  
AF-152-NV-WW



Rubber Bumper

Hinged & Locking Door

For extra protection and peace of mind about your mail, add the optional locking door. The 1/2" slot along the width of the mailbox allows your mailman to insert all your important envelope size mail. Add the optional magazine rack for newspapers and magazines that do not need security protection.

Castle Hill Horizontal  
AF-1902-OP-HN



Our heavy gauge solid brass magazine rack is designed to fit all wall mounted mailboxes and will give your America's Finest mailbox that old fashioned look.

(MR) Magazine Rack

*"More Than Just A Box For Mail."*



Dragonfly Vertical  
AF-811-NV-GI

Create a beautiful mailbox with the many exclusive designs and options from America's Finest Mailbox Company. We have created a line of mailboxes that are simply more than just a box for your mail. Check out our website, [www.americasfinestmailbox.com](http://www.americasfinestmailbox.com) to see the many exclusive designs available for you to create your "mailbox masterpiece".



Classic House Number Horizontal  
AF-2-WB-GI



Pasadena "POST" Horizontal  
AF-22-BP-GI



Classic Horizontal  
AF-2-OB



Horned Owl Vertical  
AF-621-BZ-HN



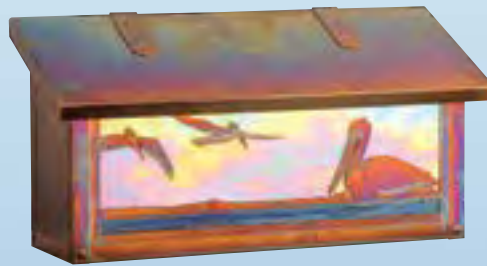
Wisteria Vertical  
AF-391-NV-GI



Castle Hill Horizontal  
AF-1902-OP-GI



Hummingbird Vertical  
AF-631 WB-GI



Pelican Horizontal  
AF-1732 OP-GI



Blue Heron Vertical  
AF-601-BZ-HN



Shorebird Horizontal  
AF-1752 OP-CH



Monterey Pine Vertical  
AF-131 NV-GI



English Ivy Vertical  
AF-361 OP-GI



*American Made...  
Classic Designs.*

Our post mount mailboxes are so well made it will be the last mailbox you will ever need to buy. We hand make every mailbox with heavy gauge brass and use hand applied rivets to create a framework of lasting quality.

You can add the optional "sliding flag" or classic tilt up flag to let your mailman know you have outbound mail.



Post Mount  
AF-520-OP



Sliding Flag for use on all post mount mail boxes.



Post Mount  
AF-501-BP



Lever flag for use on AF501 and AF-510



Post Mount  
AF-510-NV



We have created the most beautiful illuminated house numbers on the market today. The solid brass frame with rugged rivet detailing has two optional front panel designs. As with all our mailboxes, you select a patina finish and glass panel to create an illuminated house number that is a perfect complement to your home.



Illuminated House Numbers  
AF-L20 LED-OP-WW



Illuminated House Numbers  
AF-L12 LED-WB-HN



We offer two styles of 1/8" thick solid brass house numbers. Select a hand applied patina finish to coordinate with your mailbox.

1/8" thick Solid brass "framed" house numbers.  
W 4" x H 6"



1/8" thick solid brass house numbers in three sizes:  
4", 5" & 6"



FINISH  
OPTIONS



New Verde  
NV



Old Penny  
OP



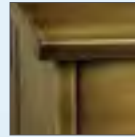
Architectural Bronze  
BZ



Warm Brass  
WB



Bronze Patina  
BP



Old Brass  
OB

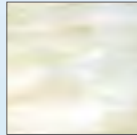


Textured Black  
TB

GLASS  
OPTIONS



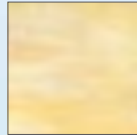
Wispy White  
WW



Champagne  
CH



Gold Iridescent  
GI



Honey  
HN

*AF*  
Exclusive

Our in-house artists have turned the ordinary box for mail into a beautiful work of art. All of our artwork selections are exclusive to America's Finest and all are copyright designs. Each mailbox is handmade at our factory in Orange, CA, with your selection of artwork, metal finish and art glass.

Limited Lifetime Warranty

Our goal is to manufacture the finest quality "American Made" mailboxes on the market today. Because this is our goal we offer a limited lifetime warranty to the original owner of an America's Finest Mailbox.

*America's Finest*  
MAILBOX COMPANY

975 N. Enterprise St. Orange, CA 92867  
888-835-5681 [www.americasfinestmailbox.com](http://www.americasfinestmailbox.com)

A Division of



OLD CALIFORNIA  
LANTERN COMPANY